

RISE **IN** **NYKE**



RULES, REGULATIONS & ENTRY INFORMATION

Prepared by:
Dance City Promotions

dancecitypromotions.ca

March 27th-31st,
2025





WHAT MAKES US DIFFERENT



Fair and Unbiased Judging

- Three adjudicators mark every routine to ensure thorough and impartial evaluations.

3 Video Adjudications per routine

- Each routine receives three video adjudications filled with positive and constructive feedback, enhancing the learning experience for performers and teachers alike.

On-Time Competition

- Rarely exceeding 12 hours per day, ensuring a timely and manageable schedule.
- Four breaks strategically scheduled throughout the day to alleviate stress and provide time for rest and rejuvenation.

Community and Support

- Emphasis on fostering a sense of community and support among participants, teachers, and families.

Celebrating Success

- Recognition and celebration of individual and collective achievements through substantial cash prizes, overalls and scholarships.

Innovative Challenges

- Introducing unique challenges not typically found at other competitions, pushing dancers to showcase their versatility and creativity.

ENTRIES:

To register your entries for the 2025 competition season, please send an email to info@dancecitypromotions.ca, and we will respond with instructions on how to do so online.

To ensure a smooth and organized process, new studios can secure their spot in our competition by reserving it on a first-come, first-served basis. This helps us avoid any last-minute surprises like reaching full capacity and being unable to accommodate studios. After accommodating returning studios, we'll open the remaining spots to new studios without requiring deposits. It's worth noting that studios who withdraw after being added to the participant list may face consequences in future years, such as not being invited back to the competition.

We will be using an online registration platform for the competition, with the registration period beginning on October 20th, 2024 for returning studios, November 1st, 2024 for new studios, and deadline for entries set for December 1st, 2024. Please note that late registration starts November 15th, 2024 and will be subject to an additional fee per routine and will not be accepted beyond January 1st, 2025.

All fees or arrangements must be made by January 15th, 2025, to ensure that everything is in order for the competition.

DIVISIONS & AGE CATEGORIES

There is no differentiation in levels for dancers, all participants will compete at the same level. However, we do offer a **Novice** category specifically designed for students who are in their first year of competitive dance.

This year, our new **19-99** category welcomes individuals of all ages, including pre-professionals, teacher features, and even those who simply enjoy attending an adult tap class.

Dancers' age categories will be determined by their average age as of December 31, 2024. Birthdays between January 1, 2025, and the competition date will be ignored.

Age categories may be combined, with a maximum of two age groups per category. If there are 12 or more contestants in a single age group, we will split them by age. For instance, if there are 18 contemporary solos in the 15-16 age range, we will split them into separate age groups for 15-year-olds and 16-year-olds. If there are 12 routines in the 15-year-old age group, we will announce the Top 5 placements.

STYLES

*** Limit of 5 Acro tricks per routine for all dances that are not in the Acro style. Multiple dancers may perform a synchronize trick on the same count to be considered one of five.

TAP

No pre-recorded tap sounds.

JAZZ

Routine incorporating over 50% of jazz technique.

LYRICAL

Routine utilizing primarily jazz technique to express emotion or conveying the lyrics of the music. Balance, control and extension should be demonstrated.

CONTEMPORARY/MODERN

Routine that pushes traditional boundaries, fusing fluidity, strength, and emotion. Rooted in pioneers like Graham and Cunningham, it combines diverse movement styles and individual interpretation. Exploring identity, relationships, and social issues, it uses the body as a powerful tool for self-expression. Evolving and innovative.

ACRO

Routines that prominently feature acrobatic techniques and tricks. This category is suitable for routines that include more than three acro tricks. Acro can be seamlessly blended with various styles like lyrical, jazz, or modern, allowing for a diverse range of creative possibilities



CLASSICAL BALLET

Routine 100% classical ballet technique.

DEMI/CHARACTER BALLET

Routine using ballet technique (syllabus use not necessary) to portray a story. Examples of this would be Nutcracker, Sleeping Beauty, Little Red Riding Hood, etc... or representing an element. Such as the Sea, Spring, Fire, etc...

POINTE

A routine where 50% or more of the dancers are on pointe or 50% or more of the routine is performed on pointe.

HIPHOP/STREET

Routines consisting primarily of hip-hop and street dance technique.

STYLES CONT

*** Limit of 5 Acro tricks per routine for all dances that are not in the Acro style.

Multiple dancers may perform a synchronize trick on the same count to be considered one of five.



PRODUCTIONS *

Performances can consist of any number and combination of dance and variety disciplines.

A five minute set-up and five minute take down period will be scheduled for each production.

Productions requiring more than 10 minutes total time for stage set up will be charged \$50. There are no age or division categories for productions.

* These numbers do not qualify for cash prizes.

MUSICAL THEATRE

A routine that uses theatrical performance and includes the use of **LIVE VOCALS**, spoken dialogue, acting, and dance. Anything containing more than 16ct of the mentioned above should be placed in this category.

VARIETY

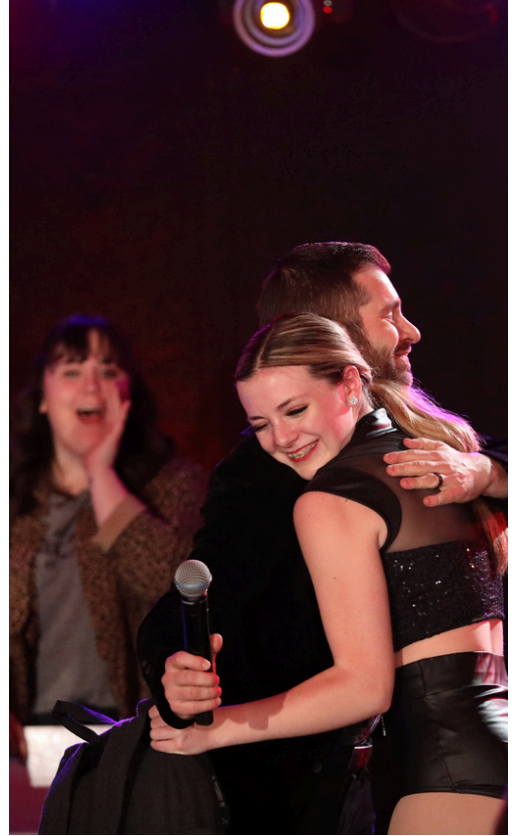
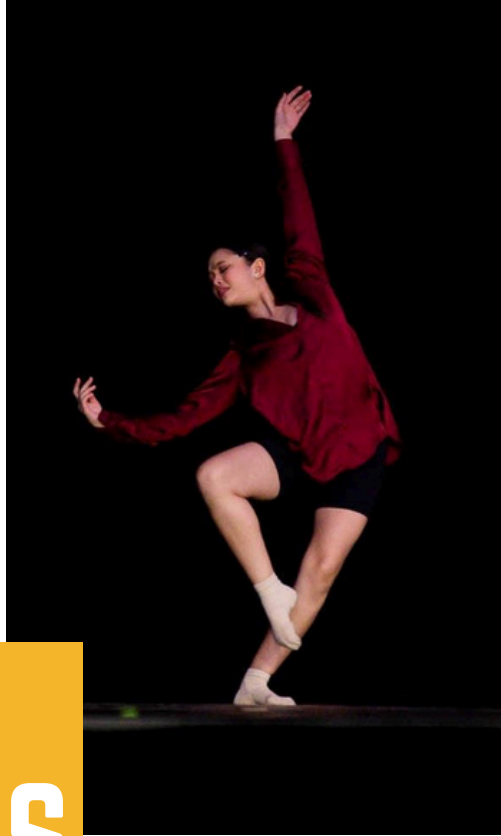
A routine that uses theatrical performance and includes the use of **LIP-SYNCING**, acting, and dance. Anything containing more than 16ct of the mentioned above should be placed in this category.

OPEN

This category is for any routine that does not seem appropriate in any of the above listed categories. I.e) Improv, National, ect. These are eligible for placements, adjudication and awards with the exception of improv winning overall choreography award.

STUDENT CHOREOGRAPHY*

This is for any routine that has been choreographed by a student. These are eligible for placements and adjudication, Awards not eligible. .



ROUTINES

Dance City Promotions reserves the right to refuse entries. Entries are received on a first-come-first-served basis. Please enter early to avoid being turned away. Late entries will be accepted only if scheduling permits and at the late entry pricing/admin charge.

REFUND POLICY

Entry fees are non-refundable. A credit will be issued for solos and duos/trios only minus a \$10 admin fee per entry. They will be issued for medical reasons only.

A letter listing the competitor's name, solos and a doctor's note must be received by Feb 1st. There are no refunds for cancellation of entries.

GROUP CATEGORIES

Including Sizes and Times

GROUP CATEGORY	NUMBER OF DANCERS	TIME ALLOTTED
SOLOS	1	2.5 MIN
DUETS	2	2.5 MIN
TRIOS	3	2.5 MIN
SMALL GROUP	4-9	4 MIN
LARGE GROUP	10-20	4 MIN
LINE GROUP	21 +	5 MIN
PRODUCTIONS	UNLIMITED	25 MIN

REPEATING/ADDITION OF DANCERS

If there is a group competing against itself with more than 50% of the dancers in both groups they must dance out of category or in open.

If the number of dancers in a routine happens to change from the time of entry, to the event, you must contact our office to inform us of the changes immediately. We will do our best to accommodate the change if it moves you out of category.

MEDALS / AWARDS

MEDALS WILL BE AWARDED TO 1ST, 2ND, AND 3RD PLACE. IF A CATEGORY HAS MORE THAN 12 ROUTINES, TOP 5 WILL BE ANNOUNCED.

THERE WILL BE ONLY 1 GOLD MEDAL AWARDED IN EACH GROUPING. TIES FOR 2ND AND 3RD ARE ALLOWED.

- The Adjudicator's decision is final on all marks/awards during the competition.
- Scholarships, overalls and trophies will be awarded at the end of the competition to the participating dancers.
- Notify competition coordinator via email within 2 weeks of the completion of competition if the scholarship awarded will not be used.
- Awards are not transferable to other School of Dance dancers, sibling/friends or instructor.

INDEPENDENT ENTRIES

Independent entries will NOT be accepted. However we have the right to allow previous Maximum Elite Performer Winners to attend without their studio as long as a studio representative is assigned to their account.

ADJUDICATION ONLY

If a dancer performs a routine outside their designated category, it will be considered for adjudication purposes only. While they will still receive feedback and adjudication videos, they will not be eligible for medals, awards, or placements.

GROUP ELEVATION CHALLENGE



Participating studios have the opportunity to showcase their talent and compete in the Group Elevation Challenge. Open to all studios attending the event (with 3 groups or more), each studio can select **two group routines** to enter into the challenge, with any genre, and group size eligible, except for productions.

NEW THIS YEAR we will have a JR category, ages 14 and under and a SR category, ages 15 and up.

Studios must declare their intent to enter the challenge during the registration process and specify the chosen routines. During the competition, the selected group routines will be removed from the regular schedule and judged head-to-head by the panel of adjudicators. The routines will be evaluated based on criteria such as technique, choreography, execution, musicality, and overall performance quality. The routine with the highest cumulative score will be crowned the Group Elevation Champions, earning the winning studio a cash prize of \$2,000 in addition to the titles.

**Dance City Promotions reserves the right to amend the rules of the Group Elevation Challenge if necessary, with any changes communicated to participating studios promptly. By entering the challenge, studios agree to abide by these rules and any decisions made by Dance City Promotions and the adjudication panel.

MAXIMUM ELITE PERFORMER

Dance City Promotions offers soloists the chance to showcase their skills in the Maximum Elite Performer.

Soloists with three or more registered solos can opt to enter this challenge.

We offer 2 age categories for the MEP, 10-14yrs and 15-18yrs.

During registration, soloists must indicate their interest in participating in the Maximum Elite Performer.



MEP

Out of their registered solos, soloists will choose two to compete in the regular competition. For these two solos, 25% of each solo's score will contribute to the soloist's final mark. The third solo will be designated for the Maximum Elite Performer (MEP) and will not be entered into regular competition. Instead, MEP solos will be performed at the end of the event in a head-to-head showdown with other MEP soloists. In this category, 50% of the MEP solo's score will be added to the combined score of the two solos from the regular competition. The soloist with the highest combined score will be crowned the Maximum Elite Performer, earning a cash prize of \$500 in addition to the title.

** Throughout the competition, soloists are expected to exhibit sportsmanship and respect. Any conduct deemed unsportsmanlike may lead to disqualification from the Maximum Elite Performer. Dance City Promotions reserves the right to amend the rules of the challenge if necessary, with any changes communicated to participants promptly. By entering the Maximum Elite Performer, soloists agree to adhere to these rules and decisions made by Dance City Promotions and the adjudication panel.

DANCE CITY PROMOTIONS DIRECTORS AND STAFF ALONGSIDE THE VENUE

- Reserves the right to video record events.
- Will not be responsible for lost or stolen articles.
- Will not be responsible for any personal injuries occurring during the competition.
- Will accept written concerns, which have been signed and submitted to a Dance City director.
- A practice room will be provided with a music system. This music system will be Electronic Device compatible.
- Dance City is NOT assuming responsibility for dancers who miss their performance BE EARLY. We reserve the right to run up to 30 minutes ahead of schedule. Performers must wait in the backstage area until their category is called and remain there once finished to return for sessional adjudication. Be ready for your performance or you could miss your time slot
- No parents or siblings are allowed backstage (schools please remind your parents of this) – Dance city employees, venue staff/ Instructors and Performers ONLY.
- NO CAMERAS AND NO VIDEOS / ALL CELLULAR PHONES ARE TO BE SWITCHED OFF IN THE AUDITORIUM.
- Any damage done to the venue will be billed to the appropriate school (i.e. damage done to the floor by use of props, etc.).

- Students and Teachers must refrain from wearing school insignias on stage. This includes taking props on and off stage.
- Please notify the backstage manager of any props used in routines, ensuring they are placed on and removed from the stage within 1 minute. Note that exceeding the time limit may incur a fee. You may purchase addition prop time on the portal when registering.
- Placement and removal of props is the responsibility of the studio.
- Props may be brought into the holding area prior to the beginning of the day or scheduled breaks that they are needed in. (Arrangements can be made to use the back loading doors).
- Please note that unsportsmanlike behavior or bullying of any kind will result in immediate disqualification from the competition and removal of awards. We strive to maintain a positive and respectful environment for all participants.

**ANY DECISION OF DANCE
CITY PROMOTIONS
REGARDING ALL MATTERS
ARISING FROM AND NOT
INCLUDED IN THESE
REGULATIONS SHALL BE
FINAL.**

MARCH 27TH-31ST
2025 SEASON

WE CAN'T WAIT

TO SEE YOU #RISE

ANY QUESTIONS?



STONES+GLASS
designs

Contact us at info@dancecitypromotions.ca